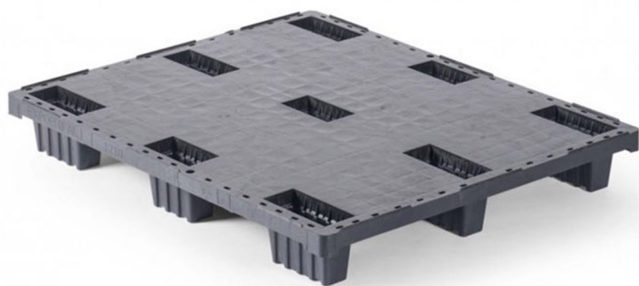


# PLASTIC PALLET 1200 X 1000 CLOSED DECK 9 FEET LIGHT

**N.QP1210LB9FR-CD**



LIGHT



PE-HD

## GENERAL

Dimensions (mm):	1200 x 1000
Height (mm):	150
Weight (kg):	8,2
Static load (kg):	2500
Dynamic load (kg):	1000
Load in rack (kg):	-
Bottom:	9 feet
Upper deck:	closed deck

**PALLETS WITH  
A PURPOSE**



Download Now 

**Q-PALL BV**  
Edisonweg 9  
5466 AR Veghel  
Nederland  
+31 413 353 111  
info@qpall.com  
www.qpall.com

**QPALL®**  
PLASTIC PALLETS