

PLASTIC PALLET 1200 X 800 CLOSED DECK 9 FEET LIGHT

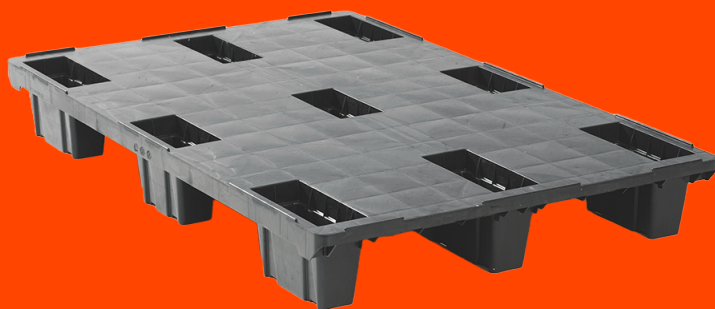
3.QP1208LB9FR-CD



LIGHT



PE-HD



GENERAL

Dimensions (mm):	1200x800
Length (mm)	1200
Width (mm)	800
Height (mm):	150
Weight (kg):	6.6
Static load (kg):	2500
Dynamic load (kg):	1000
Load in rack (kg):	0
Bottom:	9 feet
Upper deck:	closed deck

DIMENSIONS

A	B	C	D	E	F
66	66	66	267	267	149
G	H	I	J	K	L
186	151	186	284	284	149

DISCLAIMERS



Racking load conversion protocol based on 25kg bags test.



Tolerance deviation in the size of the plastic pallet +5 / -5 mm.
Tolerance deviation in the weight of the plastic pallet +5 / -5 %.



The load performance (static dynamic and racking) are determined under a evenly divided load.

**PALLETS WITH
A PURPOSE**



Download Now

Q-PALL BV
Edisonweg 9
5466 AR Veghel
Nederland
+31 413 353 111
info@qpall.com
www.qpall.com

Q-PALL®
PLASTIC PALLETS