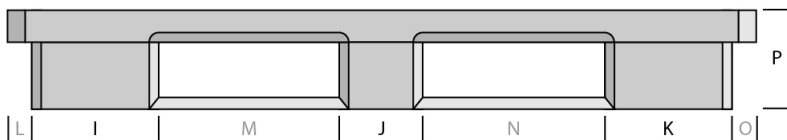
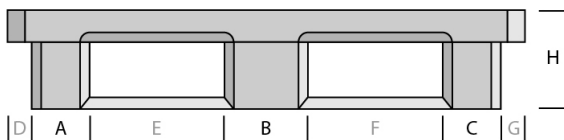
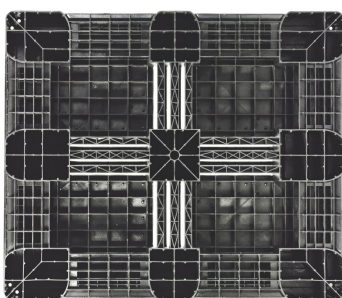
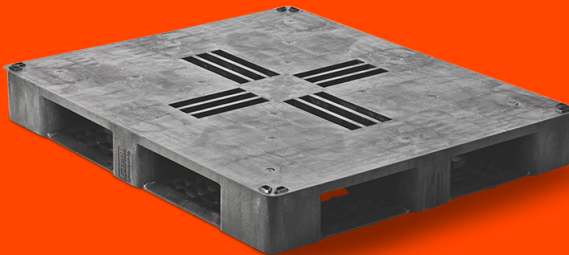


PLASTIC PALLET 1220 X 1020 CLOSED DECK 6 RUNNERS MEDIUM

QP4048MB6RR-CD



GENERAL

Dimensions (mm):	1220 x 1020
Height (mm):	150
Weight (kg):	17,8
Static load (kg):	5000
Dynamic load (kg):	1500
Load in rack (kg):	1375
Bottom:	6 runners
Upper deck:	closed deck

DIMENSIONS

A	B	C	D	E	F					
180	180	180	10	230	230					
G	H	I	J	K	L	M	N	O	P	
10	150	230	180	230	10	280	280	10	150	

DISCLAIMERS

- ☒ Racking load conversion protocol based on 25kg bags test.
- ☒ Tolerance deviation in the size of the plastic pallet +5 / -5 mm.
Tolerance deviation in the weight of the plastic pallet +5 / -5 %.
- ☒ The load performance (static dynamic and racking) are determined under a evenly divided load.



**PALLETS WITH
A PURPOSE**

Download Now

Q-PALL BV
Edisonweg 9
5466 AR Veghel
Nederland
+31 413 353 111
info@qpall.com
www.qpall.com

Q-PALL®
PLASTIC PALLETS